



XLH Australia Incorporated

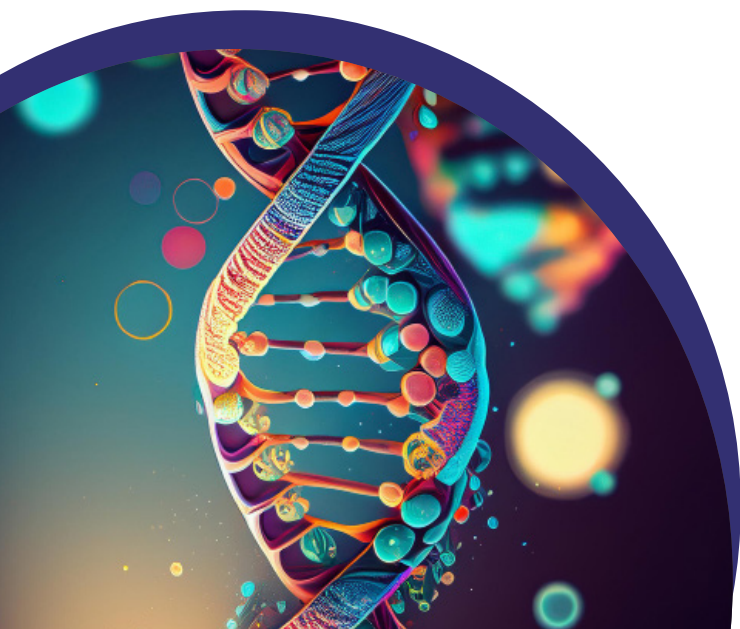
Support | Education | Advocacy



About Us

XLH Australia Incorporated is a patient support and advocacy group that was founded in 2018. Our mission is to promote XLH awareness and education for affected families, carers, medical professionals, and broader Australian community.

- ✓ Education: Resources and information to help you understand XLH.
- ✓ Support: A community of patients and carers who share their experiences and offer mutual support.
- ✓ Advocacy: Working to raise awareness and improve healthcare policies for XLH patients.
- ✓ Research: Supporting research initiatives to find better treatments for XLH.



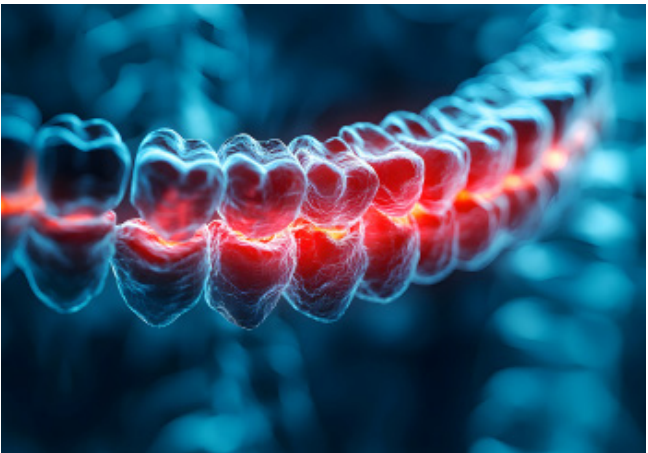
What is XLH?

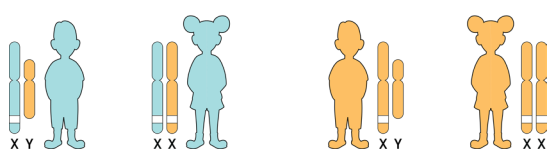
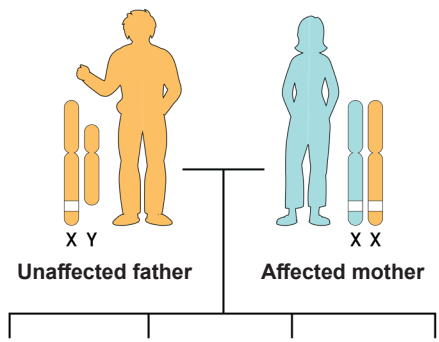
X-linked hypophosphatemia (XLH) is an inherited genetic disorder that is characterised by low levels of phosphate in the blood. The kidneys of a person with XLH do not process phosphate

A mutation in the PHEX gene on the X chromosome causes XLH, and inheritance is X-linked dominant. This means women with XLH have a 50-50 chance of passing XLH on to their children while men will pass XLH on to all their daughters.

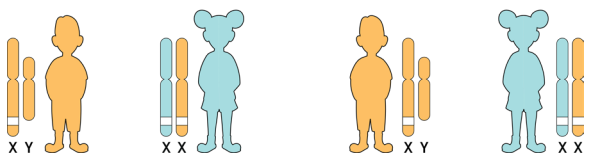
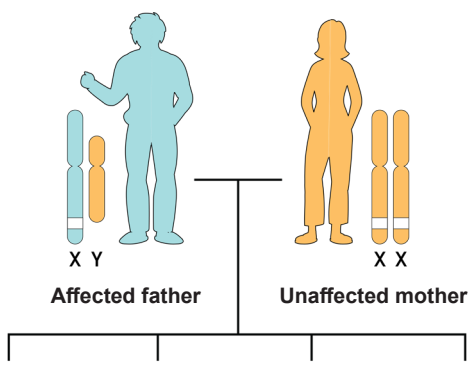
The long-term outlook varies. It depends on severity of XLH and whether there are complications. Some adults with XLH may have few medical problems, but others may experience significant discomfort or complications can lead to bone pain, fractures, and other complications.

XLH impacts the teeth as well as the bones. Patients with XLH have an increased risk of developing periodontal disease with more severe consequences, such as premature tooth loss, even in young adults.





An affected mother has a 50-50 chance of passing the gene onto her children.



An affected father will pass the gene onto all of his daughters and none of his sons.

Signs and symptoms of XLH?



Bowed legs or knock knees



Short stature



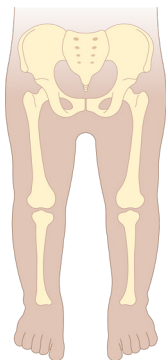
Delayed walking and a waddling gait



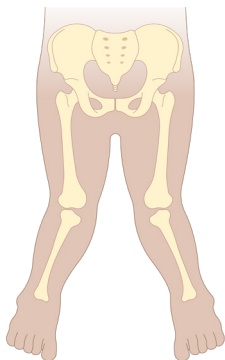
Leg pain and muscle weakness



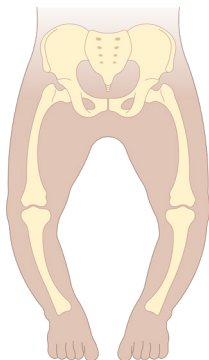
Abnormal head shape



NORMAL KNEE



VALGUS
KNOCK KNEE



VARGUS
BOW LEGS



Contact Us

xlhaustralia@gmail.com



www.xlhaustralia.com



PO Box 79
Craigieburn, Victoria 3064
Australia

This brochure was produced with the assistance of an independent medical education grant from Kyowa Kirin Australia.